



CAREERS WALES MID GLAMORGAN & POWYS PUPIL DESTINATION REPORT 2010 / 2011

A summary of the destinations of pupils
from Years 11, 12 and 13
as collected on
October 31st 2011

*Merthyr
Tydfil
Unitary
Authority*



INVESTOR IN PEOPLE



gyrfacymru.com | careerswales.com

Merthyr Tydfil Pupil Destinations 2011

INTRODUCTION

This report outlines destination data for the Merthyr Tydfil Unitary Authority area. Careers Wales gathers information on all Year 11,12 and 13 pupils, including special schools, and produces these figures, based on their destination as at 31st October 2011.

NB: Unfortunately, the report does not have data on young people who have been attending full-time college courses.

This year's report includes:

- Comments, graphs and figures for the academic year 2010/2011.
- Comments, graphs and figures for a 5-year period 2007- 2011.

We put particular emphasis on the destinations of Year 11 and Year 13 pupils as the most significant transition points.

Reports on all the Unitary Authority areas in Wales are available on careerswales.com as is the annual All-Wales Destination report.

We hope you find our report and commentary interesting and that it will be of some value to you in your future planning decisions.

If you require any additional information, please contact me at the email address below or speak to your local Careers Wales contact.

Many thanks

Sally Knock

sally.knock@cwmgp.co.uk

Contents:

Year 11 Cohort	1
5-year Trends – Year 11	2
Year 12 Cohort	3
Year 13 Cohort	4
5-year Trends – Year 13	5
Definitions	6

IMPORTANT

Please note:

Full-time education (college) figures may include a very small number of pupils who went on to do a part-time college course (i.e. a course of under 16 hours per week) after leaving school.

Some percentages have been rounded up or down therefore totals may not always add up to 100%.

Merthyr Tydfil Pupil Destinations 2011 – Year 11

YEAR 11 COHORT

- 700 in the cohort, a decrease of 47 (6.3%) from 2010.
- **Gender Breakdown:** Male 47%, Female 53%.

Education (See tables below)

- **Remaining in Full-Time Education** **80%**, a significant percentage rise on the 2010 figure (75%) but only represents an **actual increase** of 2 pupils.
- **Continuing in school** **53%**, an increase of 4 pupils.
- **Continuing in college** **27%**, a decrease of 2 pupils.

NB. Underlying these figures are significant variations between the 4 mainstream schools. Figures range from:

Continuing in school	44% - 66%
Continuing in college	17% - 41%

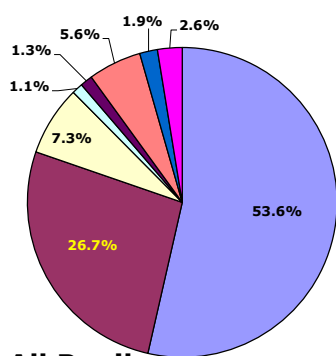
Work and Training

- **Entering Employment** 9 pupils, down from 15 in 2010
- **Entering Apprenticeships / WBT Employed status** 8 pupils (1.1%)
- **WBT, Non-employed status** 51 pupils (7.3%), down from 80 (10.7%) in 2010

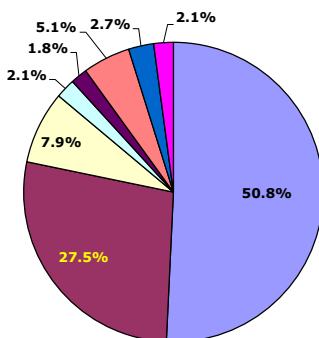
Not in Education, Employment or Training (NEETs)

39 pupils (5.6%), down from 57 (7.6%) in 2010

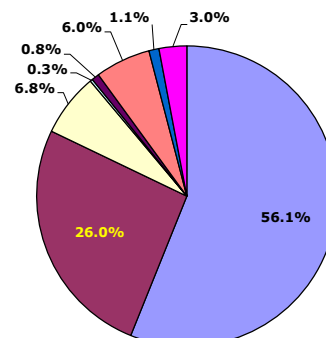
Year 11 Destinations		Male	Female	Total
	Full-Time Education - School	168	207	375
	Full-Time Education - College	91	96	187
	WBT - Non Employed Status	26	25	51
	WBT - Employed Status	7	1	8
	Employed	6	3	9
	Not in Education, Employment, or Training	17	22	39
	No Response To Survey	9	4	13
	Left The Area	7	11	18
	Total	331	369	700



All Pupils



Males



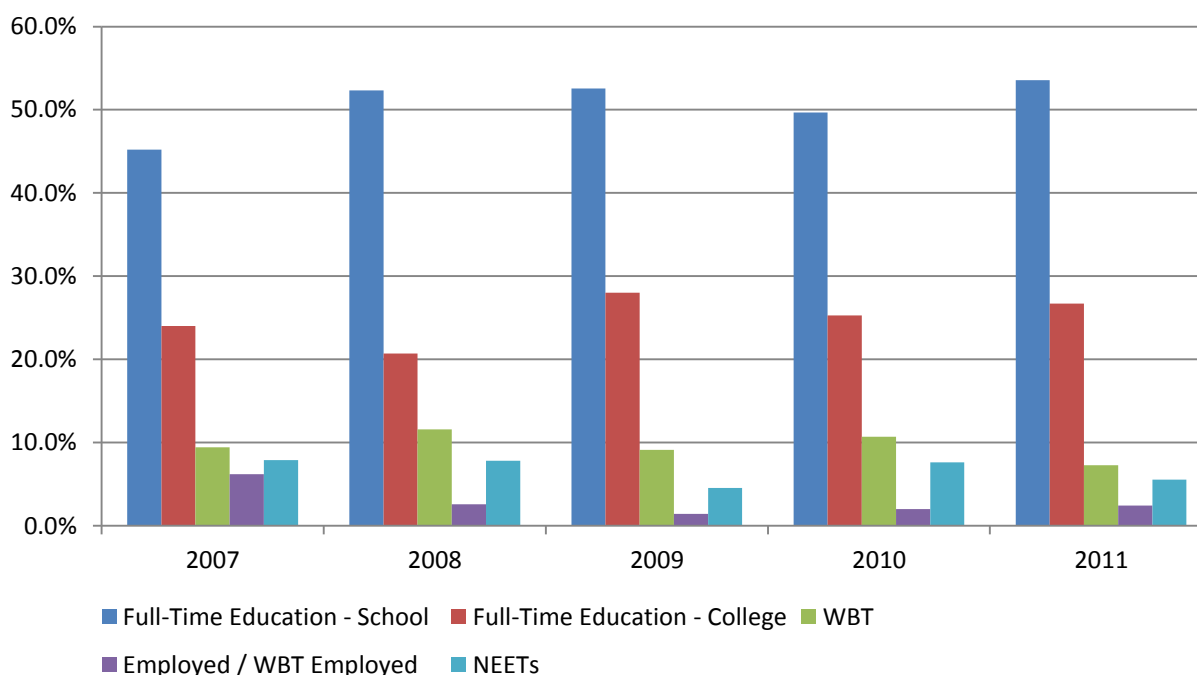
Females

Merthyr Tydfil Pupil Destinations 2011 – Year 11

5-YEAR TRENDS – YEAR 11

- The total Year 11 cohort has dropped by nearly 10% since 2007.
- The percentage of **pupils staying in education** has increased from 69% (536) in 2007 to 80% (562) in 2011.
- The distribution of pupils between school and college has remained fairly consistent. Around 50% have continued in school and around 25% have moved on to college.
- Girls represent a **greater percentage of those continuing** in full-time education than their male counterparts throughout. This gap has closed to some extent in the 5-year period with a difference of around 9% in 2007 to one of 4% in 2011.
- A higher percentage of the cohort entered **non-employed Work Based Training** than in neighbouring UAs, throughout the 5-year period. Nevertheless, the percentage has decreased throughout that time and the actual number entering **Work Based Training** has reached a 5-year low at 59.
- The numbers **entering employment** have continued to fall from 31 in 2007 to 9 this year.
- The **NEETs** figure has reduced steadily over the 5-year period from nearly 8% in 2007 to this year's figure – 5.6%. This can be explained in part by the increased numbers continuing in education. The NEETs figure does, however, represent a higher percentage of the cohort than in neighbouring UAs throughout the 5-year period.

All Destinations Year 11	2007	2008	2009	2010	2011
Full-Time Education - School	45.2%	52.4%	52.5%	49.7%	53.6%
Full-Time Education - College	24.0%	20.7%	28.0%	25.3%	26.7%
Full-Time Education - Total	69.3%	73.1%	80.6%	75.0%	80.3%
WBT	9.4%	11.5%	9.1%	10.7%	7.3%
Employed / WBT Employed	6.2%	2.6%	1.4%	2.0%	2.4%
NEETs	7.9%	7.8%	4.6%	7.6%	5.6%



Merthyr Tydfil Pupil Destinations 2010 - 2011

YEAR 12 COHORT

- 370 in cohort, a decrease of 37 (9%) on 2010.
- **Gender Breakdown:** Male 50% Female 50%.

Education

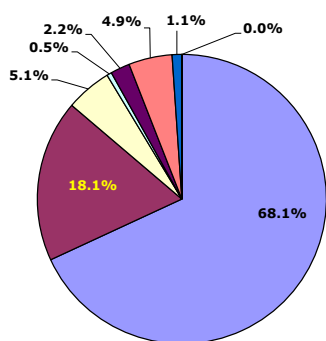
- **Remaining in Full-time Education** **86%**, - an **actual decrease** of 36 on last year's figure pupils
- **Continuing in school** **68%**, a decrease of 35 pupils
- **Continuing in college** **18%**, a decrease of 1 pupil

Work and Training

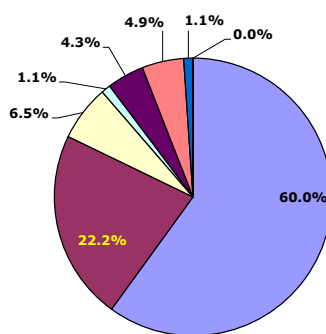
- Most pupils staying in education will continue for at least 2 years, making figures for Work and Training very low.
This year fewer entered employment or employed status WBT following Year 12 than in Year 11, 10 pupils from Year 12 and 17 from Year 11.
- Over 22% of males left to pursue college courses – 8% more than last year.

NEETs are equally balanced between males and females and are slightly lower than in Year 11.

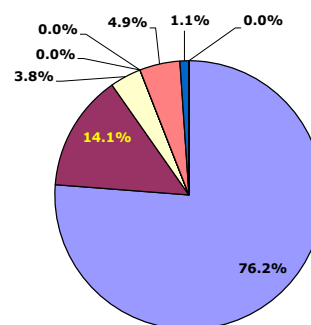
Year 12 Destinations	Male	Female	Total
Full-Time Education - School	111	141	252
Full-Time Education - College	41	26	67
WBT - Non Employed Status	12	7	19
WBT - Employed Status	2	0	2
Employed	8	0	8
Not in Education, Employment, or Training	9	9	18
No Response To Survey	2	2	4
Left The Area	0	0	0
Total	185	185	370



All Pupils



Males



Females

Merthyr Tydfil Pupil Destinations 2010 - 2011

YEAR 13 COHORT (These figures include a small number of pupils who stay on for a third year in sixth form)

- 329 in the cohort, a rise of 4.4% since 2010.
- **Gender breakdown:** Male 41.5%, Female 58.5%.

Education (see tables below and over)

- **Remaining in full-time education including school/ college/ Higher Education (HE)** **82%** (270) an increase of 20 pupils on the 2010 figure (see tables below).
- **Continuing in school or college education (rather than progressing to HE)** **36%** considerably higher than in 2010 (28.6%) and also higher than other neighbouring UAs (the nearest comparison would be 23% in RCT).
- **Continuing into Higher Education** **46%** (152 pupils) a decrease from 51% in 2010. Of those going on to higher education, **65%** were female and **35%** male.
- **Gender Breakdown** Of the total continuing in any type of full-time education **58%** were female and **34%** male.

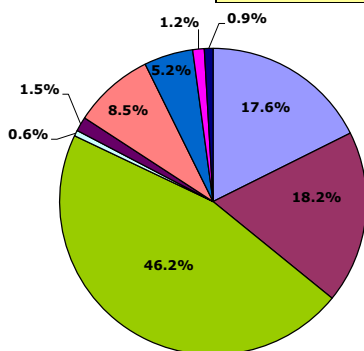
NB: The percentage of young men progressing to Higher Education from Merthyr Tydfil this year is lower than at any time in the previous 5 years.

Work and Training

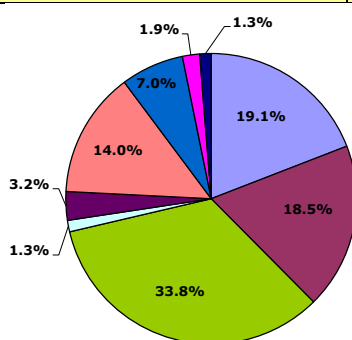
- **Entering Employment** **8.5%** (28) a marked increase on last year's figure of 4% (13). **79%** of these pupils are male.
- **Entering Employed Status WBT** **3.2%** (5) all male.

Of the remainder, **5.2%** were **NEETs** and **2.1%** did not respond at the time of the survey or are known to have left the area.

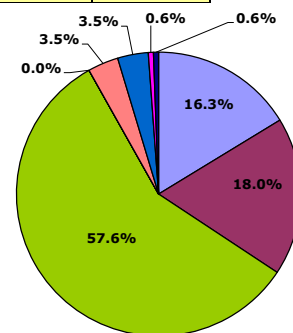
Year 13/14 Destinations	Male	Female	Total
Full-Time Education - School	30	28	58
Full-Time Education - College	29	31	60
Full-Time Education - HE including Gap Year	53	99	152
WBT - Non Employed Status	2	0	2
WBT - Employed Status	5	0	5
Employed	22	6	28
Not in Education, Employment, or Training	11	6	17
No Response To Survey	3	1	4
Left The Area	2	1	3
Total	157	172	329



All Pupils



Males



Females

Merthyr Tydfil Pupil Destinations 2010 - 2011

5-YEAR TRENDS – YEAR 13

- The percentage of the cohort continuing in some form of full- time education has increased over the period from 74% in 2007 to 82% this year.
- The percentage of those continuing in school and college (**rather than progressing to HE**) has increased significantly during the 5-year period – doubling from 18% in 2007 to 36% in 2011. This pattern is particularly marked in Merthyr and it is significantly higher than neighbouring UAs.
- Progression to Higher Education in Merthyr has actually **dropped to a 5-year low this year** and represents a drop of 10% since 2007.
- The percentage of young men progressing to Higher Education may be a cause for concern given that our data shows a **20% decrease** from 53.8% in 2007 to 33.8% in 2011. This is the only figure for the 5-year period from across our company area that falls below 40%.
- The same progression figure for young women in Merthyr is **23% higher** but is still the **lowest percentage** for progression to HE amongst young women in the company area.

All Destinations Year 13/14	2007	2008	2009	2010	2011
Full-Time Education – School	6.7%	6.7%	7.2%	11.7%	17.6%
Full-Time Education – College	11.2%	16.0%	12.5%	16.8%	18.2%
Full-Time Education – Higher Education	56.1%	57.1%	67.4%	50.8%	46.2%
Full-Time Education – Total	74%	79.8%	87.1%	79.4%	82.1%
WBT	0%	0%	0.0%	0%	0%
Employed / WBT Employed	11.1%	10.9%	3.8%	5.1%	10%
NEETs	10.4%	8.3%	7.6%	7.3%	5.2%

Year 13/14 - Male / Female		2007	2008	2009	2010	2011
Full-time Education - School / College / HE	All	74.0%	79.8%	87.1%	79.4%	82.1%
	Female	74.0%	81.5%	89.7%	83.8%	91.9%
	Male	73.9%	77.8%	84.0%	74.8%	71.3%
Progressing into Higher Education	All	56.1%	57.1%	67.4%	50.8%	46.2%
	Female	58.0%	59.5%	74.5%	56.9%	57.6%
	Male	53.8%	54.2%	58.8%	44.5%	33.8%

DEFINITIONS

WBT – Work Based Training

Government sponsored training programmes.

This includes Traineeships, Foundation Apprenticeships and Apprenticeships.

WBT non-employed status

Young people on WBT programmes who are in receipt of a training allowance.

WBT employed status

Young people on WBT programmes who also have a contract of employment.

It includes all those on Apprenticeships.

Employed

In employment with no involvement in government sponsored training (but may include informal or in-house training).

Full-time Education

Includes young people who continue to follow academic and/or vocational courses at school or Further Education College.

Higher Education (HE)

Study beyond secondary level at university or other institution of higher education or college of further education.

Not in education, employment or training

Those registered with Careers Wales for support to find a placement in education, employment or training.

Those available for work, training or education but not registered with Careers Wales.

Those not available for work, training or education e.g. pregnant, carer, in custody, ill health.

Left the area

Known to have left the local area, but not necessarily Wales.

No response

Did not respond to our enquiries.

We hope you have found this analysis useful.

**Should you require any more detailed information, please email
information&marketing@cwmgp.co.uk**